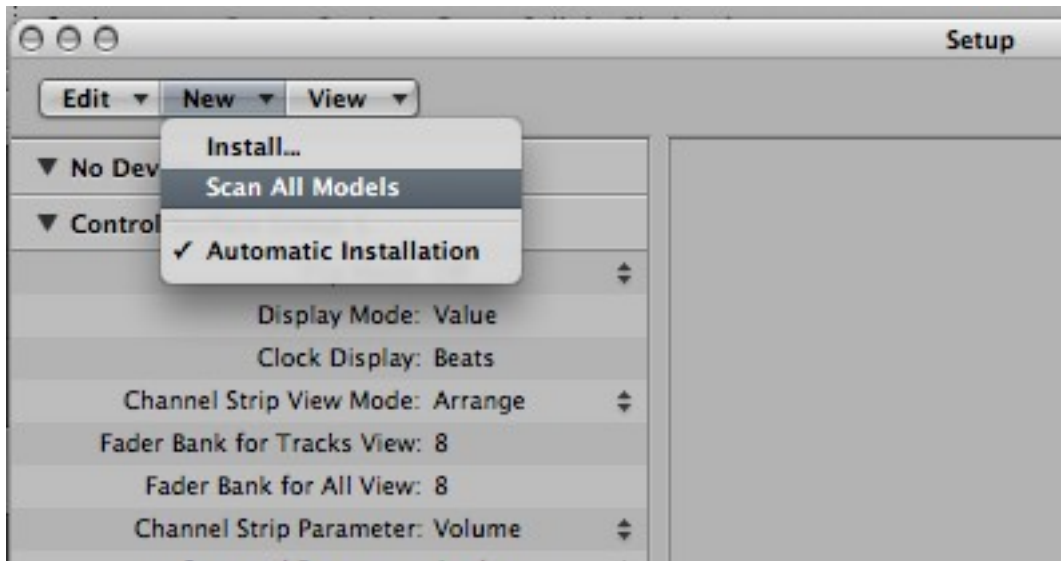
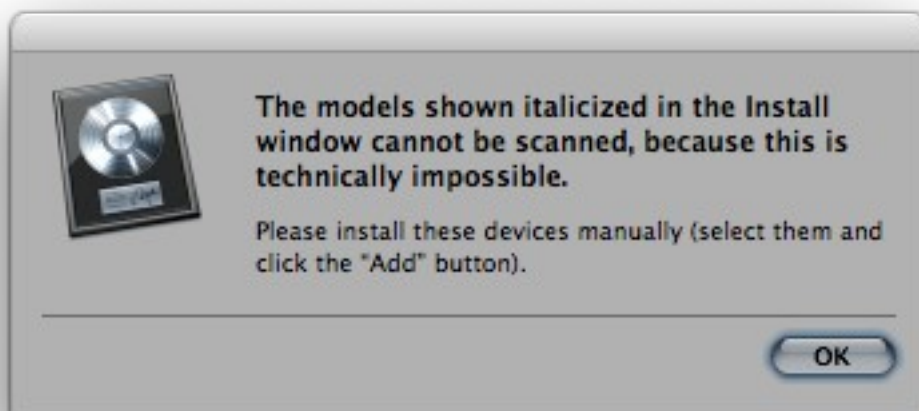


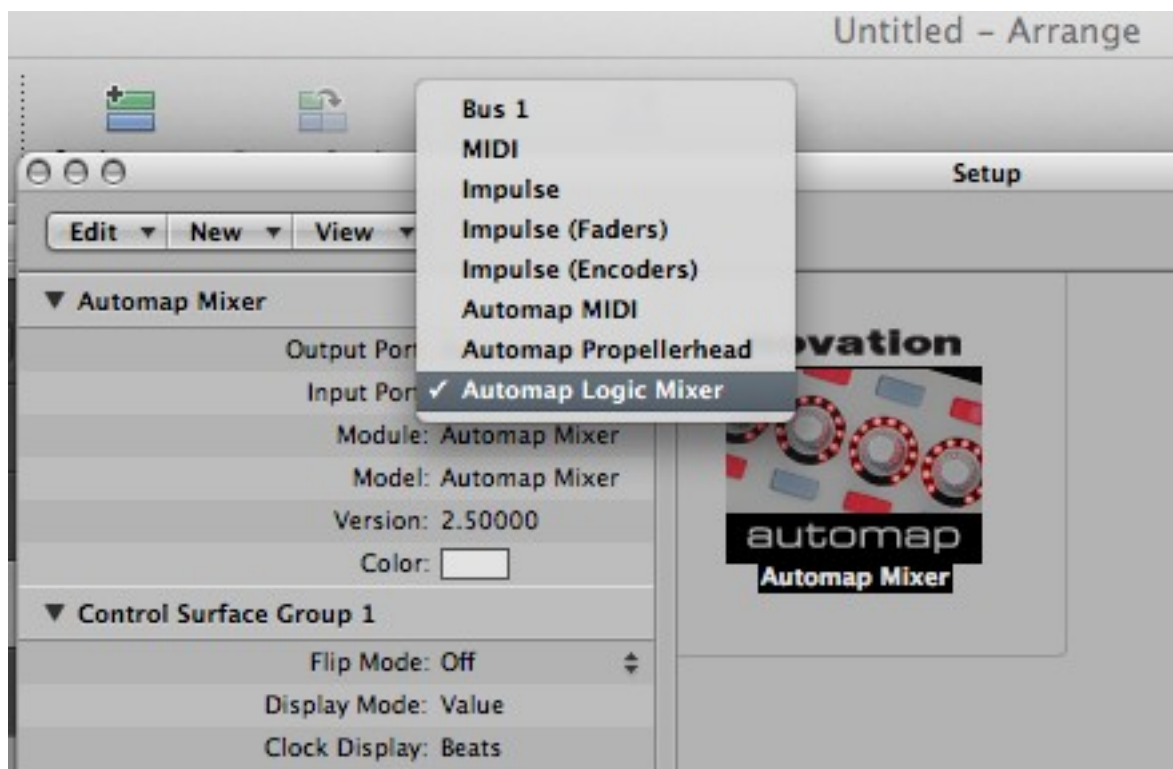
1. Click on Logic PRO > Preferences > Control Surface > Setup and click on New > 'Scan All Models'



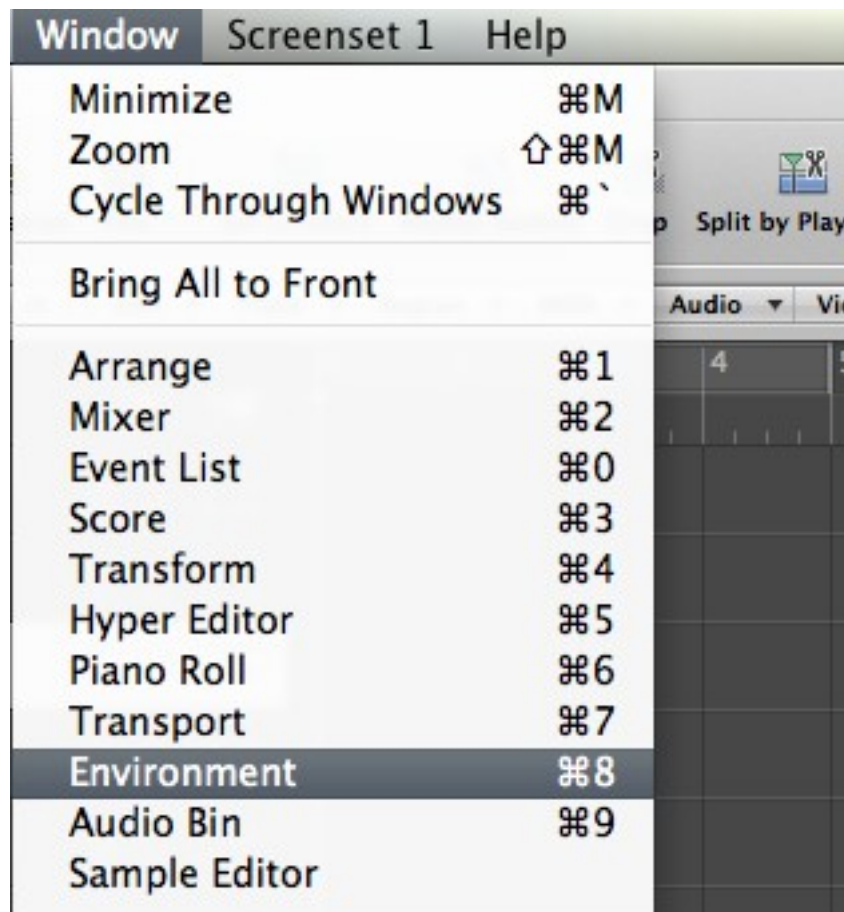
2. You will receive the following message. This is expected, click on 'OK.' You will notice the 'Novation Automap Mixer' control surface will automatically appear. Please close the 'Install' window, without clicking on 'Add' or 'Scan'



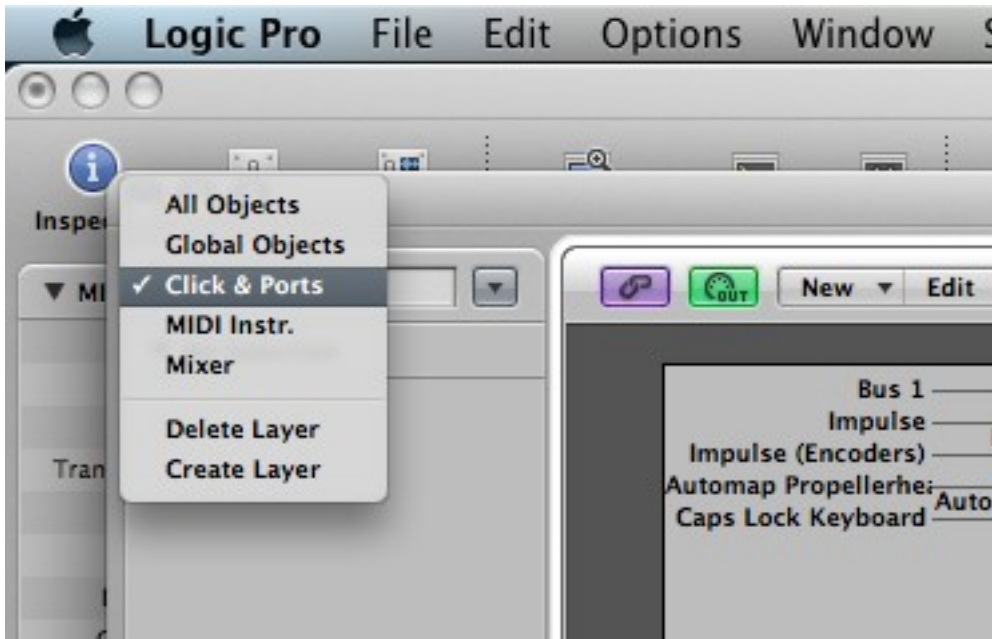
3. Check that the 'Output Port' and 'Input Port' are set to 'Automap Logic Mixer' and close this window.



4. Click on the 'Window' menu and select 'Environments'



5. Click on the drop down menu arrow and select 'Click and Ports'



6. Click on the 'New' menu and select 'Monitor'



7. Drag the Monitor out of the way of the keyboard and locate the following ports - Port 2, Automap Propellerhead and Automap Logic Mixer. Once connected please close this window.

